

'Ein as Sultan Camp Profile



Prepared by



The Applied Research Institute – Jerusalem

Funded by



Spanish Cooperation

2012

Acknowledgments

ARIJ hereby expresses its deep gratitude to the Spanish agency for International Cooperation for Development (AECID) for their funding of this project.

ARIJ is grateful to the Palestinian officials in the ministries, municipalities, joint services councils, camp committees and councils, and the Palestinian Central Bureau of Statistics (PCBS) for their assistance and cooperation with the project team members during the data collection process.

ARIJ also thanks all the staff who worked throughout the past couple of years towards the accomplishment of this work.

Background

This report is part of a series of booklets, which contain compiled information about each city, village, and town in the Jericho Governorate. These booklets came as a result of a comprehensive study of all localities in Jericho Governorate, which aims at depicting the overall living conditions in the governorate and presenting developmental plans to assist in developing the livelihood of the population in the area. It was accomplished through the "Village Profiles and Needs Assessment;" the project funded by the Spanish Agency for International Cooperation for Development (AECID).

The project's objectives are to survey, analyze, and document the available natural, human, socioeconomic and environmental resources, and the existing limitations and needs assessment for the development of the rural and marginalized areas in the Jericho Governorate. In addition, the project aims at preparing strategic developmental programs and activities to mitigate the impact of the current political, social, and economic instability with special emphasize on agriculture, environment and water.

All locality profiles in Arabic and English are available online at <http://vprofile.arij.org>.

Table of Content

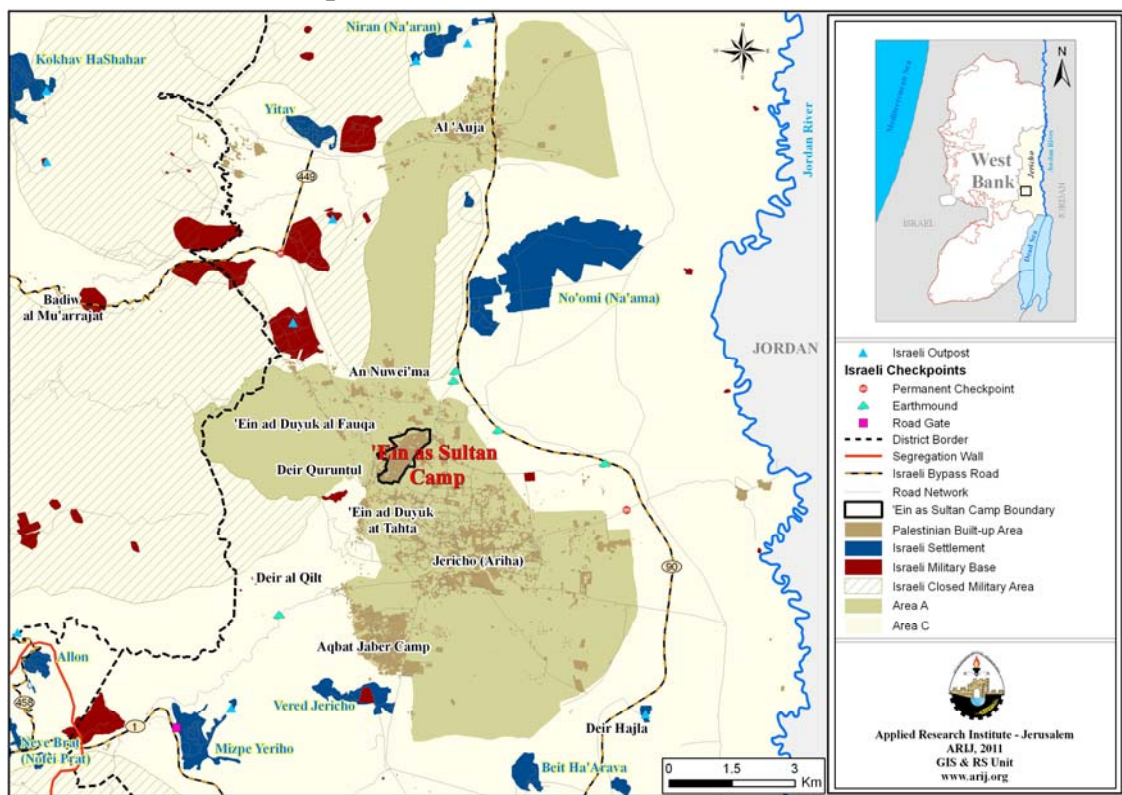
Location and Physical Characteristics.....	4
History.....	5
Religious and Archaeological Sites.....	6
Population.....	7
Education.....	7
Health Status.....	8
Economic Activities.....	9
Agricultural Sector.....	11
Institutions and Services.....	12
Infrastructure and Natural Resources.....	13
Environmental Conditions.....	16
The Geopolitical Status in 'Ein as Sultan Camp.....	16
Development Plans and Projects.....	17
Locality Development Priorities and Needs.....	18
References.....	19

'Ein as Sultan Camp Profile

Location and Physical Characteristics

'Ein as Sultan is a Palestinian camp in Jericho Governorate located (horizontally) 2.5km north of Jericho City. 'Ein as Sultan is bordered by Jericho city to the east and south, An Nuwei'ma village to the north, and Ad Duyuk village to the west (ARIJ- GIS Unit, 2010) (See map 1).

Map 1: 'Ein as Sultan location and borders



Source: ARIJ - GIS Unit, 2011.

'Ein as Sultan is located at an altitude of 198m below sea level with a mean annual rainfall of 146.4mm. The average annual temperature is 24 °C, and the average annual humidity is approximately 49% (ARIJ – GIS Unit, 2010).

Since 1994, 'Ein as Sultan has been governed by a Camp Committee, which is currently administrated by 9 members appointed by the Palestinian National Authority, with an additional 6 employees working in the Committee. Moreover, the Camp Committee owns a permanent headquarters and one device for water maintenance, but does not own a vehicle for the collection of solid waste ('Ein as Sultan Camp Committee, 2011).

It is the responsibility of the Camp Committee to provide a number of services to the residents of 'Ein as Sultan ('Ein as Sultan Camp Committee, 2011), including:

1. Establishing and maintaining the water network.
2. Road construction and rehabilitation, paving, street cleaning and social development services.
3. Implementing projects and case studies for the camp.
4. Providing transportation vehicles.
5. Protecting historical and archeological sites in the camp.
6. Providing kindergartens.

History

'Ein as Sultan camp's name comes in relation to 'Ein as Sultan Spring which is located in the camp ('Ein as Sultan Camp Committee, 2011).

The establishment of the camp dates back to 1948 and its residents origin can be traced to Jaffa, Ar Ramla city, Bir as Sabi' and their surrounding villages, in addition to Gaza city ('Ein as Sultan Camp Committee, 2011) (See photo below for 'Ein as Sultan camp).

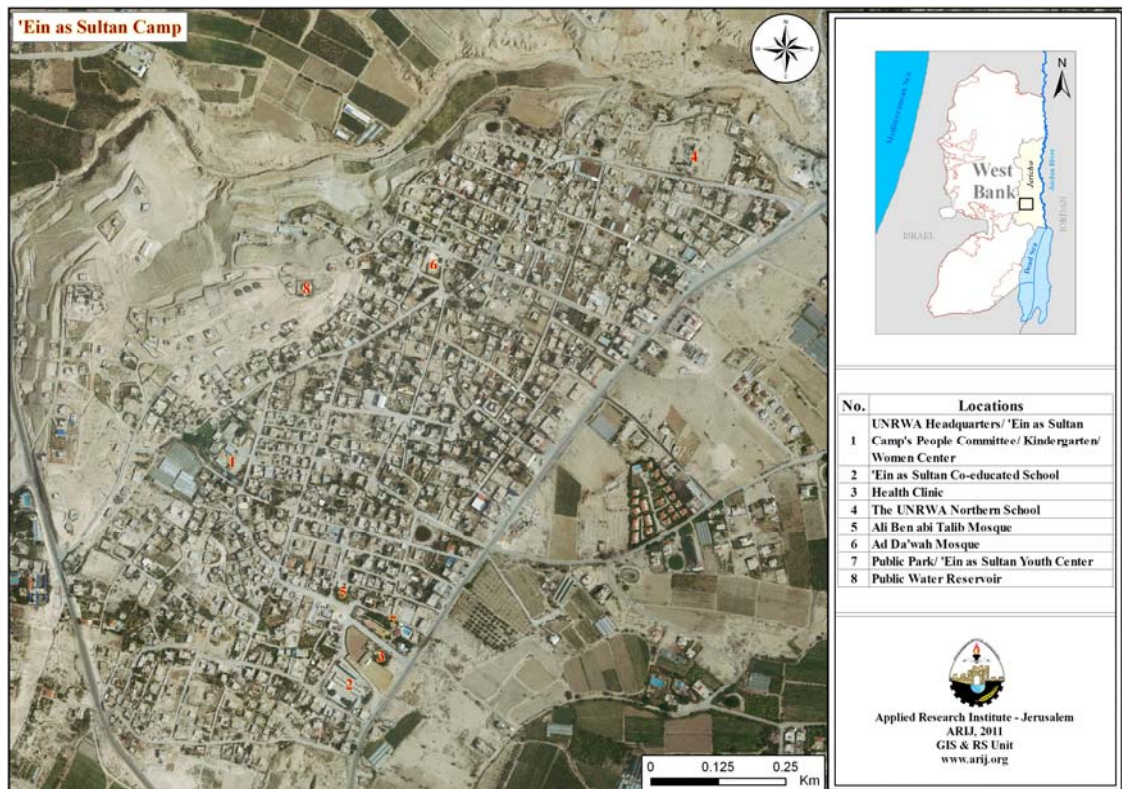
Photo 1: A general view of 'Ein as Sultan Camp



Religious and Archaeological Sites

In terms of religious establishments, there are two mosques in the camp; Ali ben Abi Talib and Ad Da'wah Mosques. As for the archaeological sites, there are a few, mainly: 'Ein as Sultan al Kabir Mosque and As Sultan Hill (Tall as Sultan); both of which are qualified for tourism. There is additionally a historic synagogue in the area (See Map 2) ('Ein as Sultan Camp Committee, 2011).

Map 2: Main locations in 'Ein as Sultan Camp



Source: ARIJ - GIS Unit, 2011.

Population

According to the Palestinian Central Bureau of Statistics (PCBS), the total population of 'Ein as Sultan in 2007 was 3,017; of whom 1,520 were male and 1,497, female. There were additionally 589 households registered to be living in 653 housing units.

Age Groups and Gender

The General Census of Population and Housing carried out by PCBS in 2007 showed the distribution of age groups in 'Ein as Sultan were as follows: 42.6% were less than 15 years, 53.9% between 15 - 64 years, whilst 2.1% fell in the 65 years and older category. Data additionally showed that the sex ratio of males to females in the camp is 101.5:100, meaning that males and females constituted 50.4% and 49.6% of the population, respectively.

Families

'Ein as Sultan residents are composed of several families, mainly: Ad Dawayma and Ad Dawahik families ('Ein as Sultan Camp Committee, 2011).

Education

According to the results of the PCBS Population, Housing and Establishment Census-2007, the illiteracy rate among 'Ein as Sultan population was approximately 5.4%, of whom 76.8% were females. Of the literate population, 14.6% could only read and write, with no formal education 27.3% had elementary education, 28.9% had preparatory education, 13.4% had secondary education, and 9.6% completed higher education. Table 1, shows the educational level in the camp of 'Ein as Sultan, by sex, and educational attainment in 2007.

Table 1: 'Ein as Sultan population (10 years and above) by sex and educational attainment

S E x	Illite- rate	Can read & write	Elem- entary	Prepa- ratory	Second- ary	Associate Diploma	Bach- elor	Higher Diploma	Master	PhD	Un- known	Total
M	26	153	304	304	149	28	58	1	7	-	3	1,033
F	86	150	262	295	128	60	52	2	1	-	3	1,039
T	112	303	566	599	277	88	110	3	8	-	6	2,072

Source: PCBS, 2009. Population, Housing and Establishment Census-2007, Final Results

With regards to the basic and secondary education institutions and schools in 'Ein as Sultan in the academic year 2010/2011, there is only one school in the camp; 'Ein as Sultan Co-educated Elementary School which is run by UNRWA (Directorate of Education in Jericho, 2011).

In the camp there are also 1,039 students, 37 teachers, and 29 classes (Directorate of Education in Jericho, 2011). It should be noted here that the average number of students per teacher in the school is nearly 28, whilst the average number of students per class is approximately 36.

Moreover, there are three kindergartens in the camp; all run by a private body. The total number of children in the kindergartens is 208 children. Table 2 shows the kindergartens according to their names and supervising authority ('Ein as Sultan Camp Committee, 2011)

Table 2: The Kindergartens in 'Ein as Sultan by name and supervising authority

Kindergarten Name	No. of Children	Supervising Authority
Al 'Aydi as Saghira (B) Kindergarten	77	Private
Buthoor al 'Amal Society Kindergarten	58	Private
Yasmine at Tufula Kindergarten	73	Private

Source: Directorate of Education in Jericho, 2011

Nevertheless, the educational sector in 'Ein as Sultan camp suffers some obstacles, mainly:

1. The weak and inadequate teaching staff.
2. The disqualified classrooms.

Due to the lack of secondary level of education in the camp, students head to Jericho Girls High School and Hisham ben Abd al Malik Boys High School in order to complete their secondary education; each of which is 8km in distance from the camp ('Ein as Sultan Camp Committee, 2011).

Health Status

There are a couple of health centers available in 'Ein as Sultan camp; a private health center and a physician's clinic run by UNRWA. However, the absence of required health services and in emergency cases, residents of 'Ein as Sultan head to 'Ein as Sultan UNRWA clinic in 'Ein as Sultan' 1km in distance from the locality ('Ein as Sultan Camp Committee, 2011).

However, the health sector in the camp suffers many obstacles and problems, including:

1. The lack of developed health services.
2. The lack of a resident physician.
3. The lack of medicines in the UNRWA pharmacy.
4. The lack of a medical analysis laboratory.
5. The lack of an ambulance in the camp.
6. The lack of a radiology center.
7. The lack of a dental clinic.
8. The lack of a psychological rehabilitation clinic.

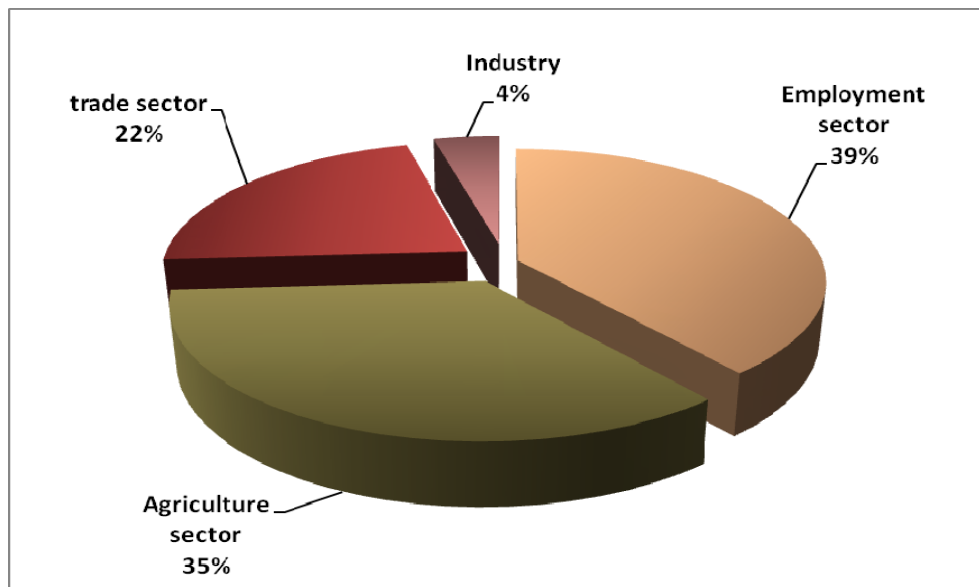
Economic Activities

The economy in 'Ein as Sultan is dependent on several economic sectors, mainly: the employees sector, which absorbs 39% of the camp's workforce (See Figure1).

The results of a field survey conducted by ARIJ in 2011 in order to achieve this study for the distribution of labor by economic activity in 'Ein as Sultan are as follows:

- Government or Private Employees Sector (39%)
- Agriculture Sector (35%)
- Trade Sector (22%)
- Industry (4%)

Figure 1: Economic activities in 'Ein as Sultan Camp



Source: 'Ein as Sultan Camp Committee, 2011

In term of commercial and industrial productions in 'Ein as Sultan camp, there are none, however, there are 12 grocery stores in the camp, 2 vegetables and fruits stores, 2

butcheries, 10 different professional workshops (carpentry, blacksmith... etc.), 10 different services stores and one stone quarry ('Ein as Sultan Camp Committee, 2011).

However, the unemployment rate in 'Ein as Sultan has reached approximately 10%, and it was found that the social groups most affected in the camp as a result of the Israeli restrictions and procedures, are the following ('Ein as Sultan Camp Committee, 2011):

1. Workers in the agriculture sector.
2. Livestock workers.
3. Former workers in Israeli.
4. Workers in the private sector.
5. Workers in the services sector.

Labor Force

According to the PCBS Population, Housing and Establishment Census-2007, 39% of 'Ein as Sultan labor force was economically active, of whom 90.6% were employed, and 60.4% were not economically active; of whom 48.4% were students and 40.9% were housekeepers (See table 3).

Table 3: 'Ein as Sultan population (10 years and above) by sex and employment status, 2007

S E X	Economically Active				Not Economically Active						Un- known	Total
	Emp- loyed	Currently Un- employed	Un- employed (Never worked)	Total	Stud- ents	House- keeping	Unable to work	Not working & Not looking for work	Other	Total		
M	597	35	23	655	289	2	40	20	19	370	8	1,033
F	135	10	8	153	317	510	48	4	3	882	4	1,039
T	732	45	31	808	606	512	88	24	22	1,252	12	2,072

Source: PCBS, March 2009. Population, Housing and Establishment Census-2007, Final Results

Agricultural Sector

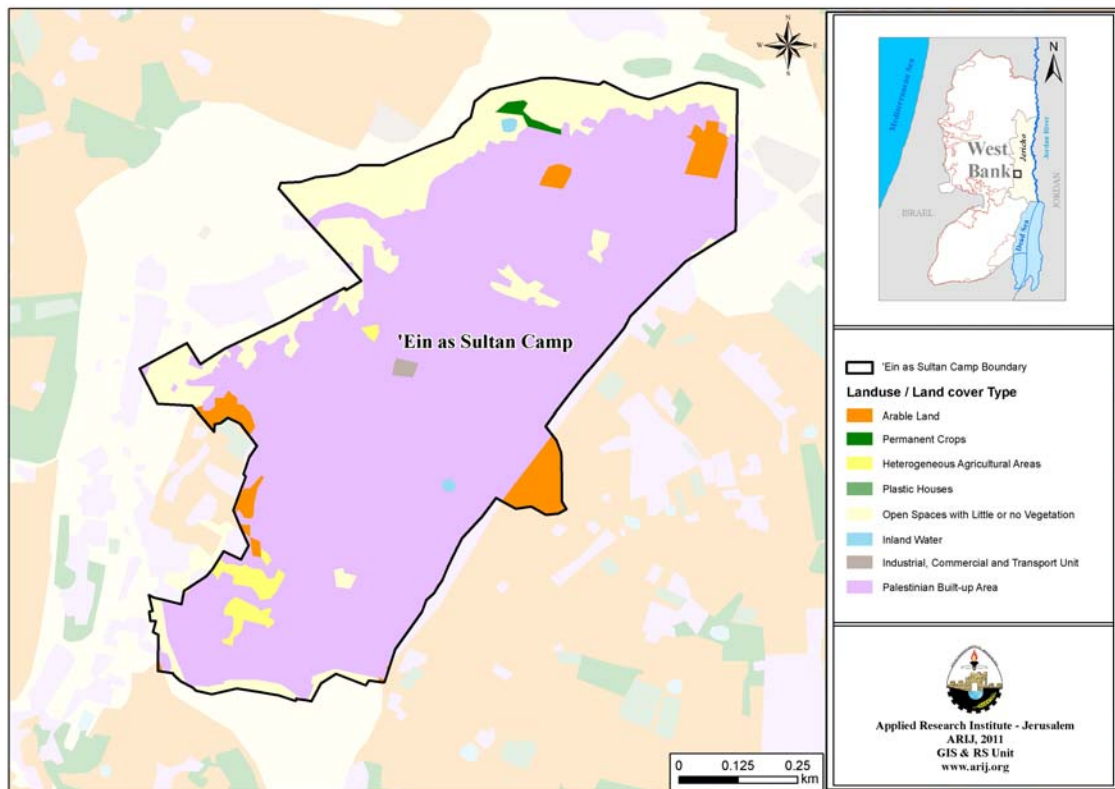
'Ein as Sultan lies on a total area of about 853 dunums of which 46 dunums are considered arable land, and 679 dunums are classified as 'residential' (See table 4 and map 3).

Table 4: Land use and land cover in Al Jiftlik in 2010 (areas in dunum)

Total Area	Built-up area	Agricultural area (63,402)				Inland water	Forests	Open Spaces	Area of Industrial, Commercial & Transport Unit	Area of Settlements and Military Bases
		Permanent Crops	Green-houses	Range-lands	Arable lands					
853	679	3	0	0	43	1	0	126	2	0

Source: ARIJ – GIS Unit, 2011.

Map 3: Land use/land cover in 'Ein as Sultan Camp



Source: ARIJ - GIS Unit, 2011.

According to agricultural statistics of the Directorate of Agriculture in Jericho and Al Aghwar (2011), there is no cultivation in the camp, which is due to the fact that the whole area of the camp is a residential populated area; there are no empty spaces for the exploitation of agriculture. However, the difference in the two sets of results of agricultural areas, obtained from the Ministry of Agriculture and by ARIJ's GIS Unit, is

explained by the fact that the Ministry of Agriculture, who in combination with the Palestinian Central Bureau of Statistics (2011) conducted a survey considering a definition of agricultural areas based on the size of ownership. Thus, the areas included in the survey were those of actual holdings of agricultural areas instead of seasonal ones. The survey did not consider fragmented and small seasonal cultivated areas in residential and agricultural areas which contains some springs. ARIJ's survey however indicated the existence of a high proportion of small and fragmented holdings (home gardens) throughout the occupied Palestinian territories. This illustrates the bigger area of agricultural holdings calculated by ARIJ.

The field survey shows that only 7% of the residents in 'Ein as Sultan rear and keep domestic animals such as sheep and bees (See Table 5).

Table 5: Livestock in 'Ein as Sultan Camp

Cows*	Sheep	Camels	Poultry	Bee Hives
0	1,337	0	0	70

* Including cows, bull calves, heifer calves and bulls

Source: Jericho & Al Aghwar Directorate of Agriculture – Jericho, 2011

However, the agriculture sector in the camp suffers many obstacles and problems ('Ein as Sultan Camp Committee, 2011), mainly:

- The lack of capital.
- The problem of marketing the agricultural products.
- The problem of water supply to agricultural lands.
- Repeated Israeli attacks on farmers.

Institutions and Services

'Ein as Sultan camp has no governmental institutions, but a number of local institutions and associations that provide services to various segments of society: children, youth, and women. The services are in the areas of culture, sports and others ('Ein as Sultan Camp Committee, 2011), including:

- **'Ein as Sultan Camp Committee:** Founded in 1994 by the Department of Refugees Affairs with the goal of taking care of all the issues in the camp and providing various services to its population.
- **'Ein as Sultan Youth Club:** Founded in 1952, and recently, it has been given license by the Ministry of Youth and Sports, with an interest in all sports, cultural and social activities.
- **'Ein as Sultan Women Center:** Founded in 2006 by the Ministry of Social Affairs, in order to follow up with the women issues in the camp and provide them with different workshops and services to improve her capacities and skills.

- **Filistinuna Center:** Founded in 2011 by the Ministry of Interior and the Ministry of Culture, in order to develop culture and folklore among 'Ein as Sultan camp residents.
- **Shaqa'iq an Nu'man Society:** Founded in 2005 by the Ministry of Social Affairs. Shaqa'iq an Nu'man is a charitable society that provides different services to 'Ein as Sultan camp residents.

Infrastructure and Natural Resources

Electricity and Telecommunication Services

'Ein as Sultan has been connected to a public electricity network since 1989; served by Jerusalem Electricity Company, which is the main source of electricity in the camp. Approximately 100% of the housing units in the camp are connected to this network. However, the camp residents suffer some problems concerning electricity ('Ein as Sultan Camp Committee, 2011), mainly:

1. The high costs of electricity, especially notable in summer months
2. The problem of exposed electricity wires.
3. The lack of street lightings.

Furthermore, 'Ein as Sultan is connected to a telecommunication network and approximately 100% of the housing units within the camp boundaries are connected to phone lines ('Ein as Sultan Camp Committee, 2011).

Transportation Services

There are two public buses considered to be the main means of transportation in 'Ein as Sultan camp ('Ein as Sultan Camp Committee, 2011). As for the road network in the camp; there are a total of 10km of 'main' roads and a total of 6km of 'secondary' roads ('Ein as Sultan Camp Committee, 2011) (See Table 6).

Table 6: Roads in 'Ein as Sultan Camp

Status of Internal Roads	Road Length (km)	
	Main	Sub
1. Paved & in good condition	2	-
2. Paved but in poor condition	8	6
3. Unpaved	-	-

Source: 'Ein as Sultan Camp Committee, 2011

Water Resources

'Ein as Sultan is provided with water by 'Ein as Sultan Camp Committee, through the public water network established in 2001. Approximately, 70% of the housing units are connected to the water network, while the remaining units depend on the purchase of water tanks from other sources ('Ein as Sultan Camp Committee, 2011).

The quantity of water supplied to 'Ein as Sultan in 2009 was estimated at 12,600 cubic meters/ month, making the rate of water supply per capita approximately 139 liters/day. However, since the recently established public network came into action, the percentage of water losses is registered as lesser than other localities; at around 3%. The losses happen at the main source, major transport lines, distribution network, and at the household level; making the resultant rate of water consumption per capita in 'Ein as Sultan, 135 liters per day (Palestinian Hydrology Group, 2011). It is noted that each cubic meter of water from the public network costs 1.30 NIS ('Ein as Sultan Camp Committee, 2011).

Moreover, are 3 public water harvesting reservoirs with a capacity of 2,250 cubic meters located in the camp.

Sanitation

'Ein as Sultan lacks a public sewerage network with most of the camp residents using cesspits as their main means of waste-water disposal ('Ein as Sultan Camp Committee, 2011).

Based on the estimated daily per capita water consumption, the estimated amount of wastewater generated per day, is approximately 285 cubic meters, or 104,091 cubic meters annually. At the individual level, it is estimated that the per capita wastewater generation is approximately 95 liters per day (ARIJ-WERU, 2012). The wastewater collected by cesspits, is discharged by wastewater tankers directly to open areas or nearby valleys without any regard for the environment. Here it should be noted that there is no wastewater treatment either at the source or at the disposal sites and this poses a serious threat to both environment and public health.

Solid Waste Management

The Joint Services Council for Development and Planning for the Management of Solid Waste in Jericho & Al Aghwar in addition to the UNRWA are considered the official bodies responsible for managing solid waste, i.e. solid waste collection and disposal, generated from the citizens and establishments in the camp. This is currently represented by solid waste collection and disposal; as upon the agreement between Jericho Municipality and the UNRWA, the Council is to manage part of the solid waste (The Joint Services Council, 2012).

Most of the population in 'Ein as Sultan benefit from the solid waste services, whereby waste is collected from households, institutions, shops, and public squares in plastic bags and then transferred to 10 containers; each with a capacity of one cubic meter, spread throughout the locality. The Council collects the solid waste from the containers three times a week and transports it through a waste vehicle owned by the Joint Council to Jericho dumping site, which is located 10km from the camp. The common method for solid waste treatment in this dumping site is through burying the waste. The disposal of solid waste in the dumping site costs 20 NIS per ton ('Ein as Sultan Camp Committee, 2011). It should be noted here that medical solid waste and hazardous waste are being separated at the landfill; there is a specific area for each type of waste to be collected at; for example, there is an area for slaughterhouse waste and another different area for medical waste (The Joint Services Council, 2012).

It should be noted here that Jericho sanitary landfill was established in 2007 with a funding from the Japanese International Cooperation Agency (JICA). The landfill serves approximately 72.2% of Jericho and Al Aghwar Governorate area (PNA, 2010), as it covers Jericho city, Ad Duyuk and An Nuwei'ma town, in addition to Aqbat Jaber and 'Ein as Sultan camps (The Joint Services Council, 2012).

Through designing the landfill, the standards of Japan (Fukouka Theory); Semi aerobic system, were taken into consideration, as the landfill was lined by two layers of soil and a layer of high density plastic (HDPE) in order to prevent leakage of leachate into groundwater, in addition to the extension of a network of pipes to collect the leachate and discharge it into a pool made specially for the collection of leachate, also, pipes were installed to collect gas and release it into the air in order to get rid of it (The Joint Services Council, 2012). Table 7 shows some information about Jericho's use of sanitary landfill; its capacity, the geographical scope it covers and the number of served population. As shown in the table below, the work in the landfill was to be finished in 2011, thus, the Council is currently preparing a plan to expand the area of the landfill for 20 extra dunums.

Table 7: Information on Jericho sanitary landfill for solid waste

Area served by the landfill	Served population	Daily amount of waste (ton/day)	Capacity (m ³)	Landfill area (dunum)	Total area (dunum)	Life-time	Time of completion
Jericho city, Ad Duyuk & An Nuwei'ma, and Aqbat Jaber & 'Ein as Sultan Camps (72.2% of Jericho & Al Aghwar Governorate)	32,368	33 - 35	53,000	10.3	26.5	4 years	2011

Source: The Joint Services Council for Development & Planning for the Management of Solid Waste in Jericho & Al Aghwar, 2012

The daily per capita rate of solid waste production in 'Ein as Sultan is 0.7kg. Thus the estimated amount of solid waste produced per day from 'Ein as Sultan residents is nearly 2.1 tons, or 770 tons per year (ARIJ-WERU, 2012).

Environmental Conditions

Like other camps and villages in the governorate, 'Ein as Sultan experiences several environmental problems which must be addressed and solved. These problems can be identified as follows:

Water Crisis

- The depletion of the groundwater sources through 'Mekorot' Israeli wells, which were given monopoly to the excavation, restoration, distribution and sell of water, whilst the Palestinians were forbidden from constructing new wells and/or restoring existing wells.
- The severe shortage of water quantity during summer periods.

Wastewater Management

The absence of a public sewage network results in the frequent use of cesspits for the disposal of wastewater, in addition to the discharge of wastewater in the streets, especially in winter, because the citizens can not afford the high cost of sewage tankers during this period. All of this causes environmental damages, health problems, and the spread of epidemics and diseases in the camp. The use of cesspits pollutes the groundwater and water collected in domestic cisterns (rainwater harvesting cisterns) as the wastewater mixes with water and contaminates it, thus making it inappropriate for human consumption. This is due to the fact that most cesspits are built without lining, which allows wastewater to enter into the ground and avoids the need to use sewage tankers from time to time. Moreover, the untreated wastewater collected from cesspits by sewage tankers is disposed of in open areas without taking into account the damage it causes to the environment and the residents' health.

The Geopolitical Status in 'Ein as Sultan Camp

According to the Oslo II Interim Agreement signed on 28th September 1995 between the Palestinian Liberation Organization (PLO) and Israel, all 'Ein as Sultan Camp, approximately 853 dunums, was assigned as area A, where the Palestinian National Authority (PNA) has a complete control over administration and security matters.

Development Plans and Projects

Implemented Projects

'Ein as Sultan Camp Committee has implemented several development projects in 'Ein as Sultan, during the last five years (See Table 8).

Table 8: Implemented development plans and projects in 'Ein as Sultan during the last five years

Name of the Project	Type	Year	Donor
Construction of a wall around the school	Construction	2010	Ministry of Local Government
Construction of a wall around the cemetery	Public Services	2010	Ministry of Local Government
Establishment of a water reservoir	Water	2010	UNPB
Restoration of 'Ein as Sultan Youth Center	Public Services	2011	USA

Source: 'Ein as Sultan Camp Committee, 2011

Proposed Projects

'Ein as Sultan Camp Committee, in cooperation with the civil society organizations in the camp and the camp residents, look forward to the implementation of several projects in the coming years. The project ideas were developed during the PRA workshop that was conducted by ARIJ staff in the camp. The projects are as follows, in order of priority, from the perspectives' of the participants in the workshop:

1. Constructing a new school.
2. Establishing a reliable sewage network.
3. Solving the water problem in summer through the construction of artesian wells and the rehabilitation of the public water network.
4. Establishing a rehabilitation center for disabled persons.
5. Constructing a sports complex to incorporate several sports field.
6. Stop raising and keeping livestock inside houses and removing the factories from residential areas.
7. Solving the problem of transportation in the camp.
8. Providing street lighting and rehabilitating the camp's streets and entrances.
9. Supporting the camp's women through the women center.
10. Establishing a free public park for the camp residents.
11. Establishing a literacy center through the Ministry of Education (MOE).

Locality Development Priorities and Needs

'Ein as Sultan suffers from a significant shortage of infrastructure and services. Table 9 shows the development priorities and needs in the camp, according to the Camp Committee's feedback.

Table 9: Development priorities and needs in 'Ein as Sultan

No.	Sector	Strongly Needed	Needed	Not a Priority	Notes
Infrastructural Needs					
1	Opening and Pavement of Roads	*			5km*
2	Rehabilitation of Old Water Networks	*			10km
3	Extending the Water Network to Cover New Built up Areas	*			5km
4	Construction of New Water Networks	*			50km
5	Rehabilitation/ Construction of New Wells or Springs	*			1 spring ('Ein ad Duyuk)
6	Construction of Water Reservoirs	*			1500 cubic meters
7	Construction of a Sewage Disposal Network	*			10km
8	Construction of a New Electricity Network	*			5km
9	Providing Containers for Solid Waste Collection	*			100 containers
10	Providing Vehicles for Collecting Solid Waste	*			3 vehicles
11	Providing a Sanitary Landfill	*			
Health Needs					
1	Building of New Clinics or Health Care Centres	*			one health clinic
2	Rehabilitation of Old Clinics or Health Care Centres	*			one health clinic
3	Purchasing of Medical Equipment and Tools	*			
Educational Needs					
1	Building of New Schools	*			all levels
2	Rehabilitation of Old Schools	*			all levels
3	Purchasing of New Equipment for Schools	*			
Agriculture Needs					
1	Rehabilitation of Agricultural Lands			*	
2	Building Rainwater Harvesting Cisterns	*			3 cisterns
3	Construction of Barracks for Livestock			*	
4	Veterinary Services			*	
5	Seeds and Hay for Animals			*	
6	Construction of New Greenhouses			*	
7	Rehabilitation of Greenhouses			*	
8	Field Crops Seeds			*	
9	Plants and Agricultural Supplies			*	

*2km are main roads and 3km are sub roads.

Source: 'Ein as Sultan Camp Committee, 2011

References

- 'Ein as Sultan Camp Committee, 2011.
- Applied Research Institute - Jerusalem (ARIJ), 2011. Geographic Information Systems and Remote Sensing Unit; Land Use Analysis (2010) – Half Meter High Accuracy. Bethlehem - Palestine.
- Applied Research Institute - Jerusalem (ARIJ), 2010. Geographic Information Systems and Remote Sensing unit Database. Bethlehem - Palestine.
- Applied Research Institute - Jerusalem (ARIJ). 2012. Water & Environment Research Unit Database (WERU). Bethlehem - Palestine.
- Ministry of Education & Higher Education (MOHE) - Jericho, 2010/2011. Directorate of Education; A database of schools. Jericho – Palestine.
- Palestinian Central Bureau of Statistics. 2009. Ramallah, Palestine: General Census of Population and Housing Censuses, 2007.
- Palestinian Hydrology Group (PHG) (2011). Water Master Plan for Jericho.
- Palestinian Ministry of Agriculture (MOA), 2010/2011. Directorate of Agriculture data. Jericho - Palestine.
- Palestinian National Authority (PNA), 2010. The National Strategy for the Management of Solid Waste in Palestine (2010 – 2014). Ramallah – Palestine.
- The Joint Services Council for Development & Planning for the Management of Solid Waste in Jericho & Al Aghwar, 2012. The Council Database. Jericho – Palestine.